



1929 Gidley
Power Wooden Yacht

DECKS



Miss Scarlett's **outside decks** are constructed from high quality teak and have been finished to ensure of scuff resistance and overall durability. The bow deck, at its mid point, measures 13' in length and is 11'2" in width. This area is surrounded by mahogany bullwork (a raised ledge) and chrome railings. The galley's skylight hatch, measuring 32"x32", is located on this deck. In addition to this spacious deck area, there is an elevated middle bow deck that measures 7'4" in length and 8' in width. The wheelhouse front windows look directly on to this area.



The **upper middle aft deck** is the roof area of the vessel's berths and main passageway. It measures 12' in length and 9'6" in width. At its base, closest to the wheelhouse, there is a large storage seating bench that extends across the width of the wheelhouse. The vessel's mast is located at the back of this bench area resting directly against the wheelhouse. Antenna, rods and receptors are housed within the mast and this unit has been hinged to allow the mast to maintain a bent position, then lying atop of the wheelhouse. This feature is required to avoid height restriction factors when entering various waterways. Chrome railings also surround this spacious deck.



Miss Scarlett has a **lower aft deck** surrounded by chrome railings that can be accessed from the upper aft deck and from the aft cabin. At its mid point this area measures 3'10" in length and 9'9" in width. The vessel's spring activated barbecue is housed on this deck. A unique feature of this unit is that when the barbecue is not in use it can be completely concealed underneath the deck. The entire barbecue unit is hidden below a hatch top that is 22" in length and 30" in width.

WHEELHOUSE

Moving to the center of the yacht, the **wheelhouse** offers entrance to the vessel from both port and starboard through glass tempered, mahogany framed doors that were widened to 22" from their original 17 ½". The decks directly outside these doors measures 24" in width and decreases to 12" at the end of the wheelhouse base where a side step and handle allows access to the upper middle aft deck.



The **wheelhouse** is the central and primary access point to Miss Scarlett's interior. This cabin's length was slightly increased and now measures 7' in length and is 7'5" in width. As with all other cabins, the wheelhouse head height has been increased to 6' 4" and this height is consistently maintained throughout the vessel. This height adjustment was accomplished by lowering the sole and elevating the overhead. The wheelhouse's fabulous finished sole is an elegant combination of pecan wood and thin mahogany strips. Using a lighter wood on the sole adds to the cabin's visual effect of it's elevated head height. Light switches are conveniently placed at both door entrances; however, this cabin offers an abundance of natural light as it is completely surrounded by a total of 12 windows.



Located at the bow of this cabin is the vessel's **navigational center**. A large counter area houses many fixed or built in sailing instruments, such as the sonar radar alarm system that alerts passengers whenever the vessel is approaching dangerous items (rocks etc.). The yacht's pathfinder screen is also fixed atop this counter and works in correlation with the computer lap top's charting and sailing programs. Extended from the base of the counter is the vessel's large operational steering-wheel and neatly housed below this is an electrical panel that is hidden behind a sliding raised mahogany door. The vessel's ship to shore radio/phone device is conveniently placed on the right side of the wheel panel. The navigational center is further complimented by its many brass accents. To the left of the navigational counter, moving towards the bow of the vessel are three stairs that lead down to the yacht's elegant dining salon.



Along the aft and starboard bulkhead of the wheelhouse is a large curved mahogany bench seat that comfortably accommodates four people. This seating area is tall in height as it is placed over top of the engine room's aft entrance area where space has been allocated to permit a passenger to stand upright. To the far left and beneath the wheelhouse's bench seat is a conveniently concealed bar fridge that is 2'high x 14"wide x11"deep. Also at the left and end of the bench seat are four stairs that lead down to the main passageway moving toward the aft section of Miss Scarlett. Located within these stairs is a storage area that houses the central vacuum hose and its connecting outlet. The central vacuum's main system is located underneath the sole of the dining salon.



DINING SALON



Miss Scarlett's **dining salon** measures 7' in length and 7'8" in width. This cabin's natural light is filtered through three large windows from both port and starboard as well from the galley's skylight. In addition to the cabin's overhead lighting placed along the ceiling there are two pivotal lamps affixed to the aft wall which would be beneficial when playing cards or doing other activities centered upon the dining table. The exquisite mahogany dining table has been customized with an electrical dual level adjuster that enables the table to offer three specific functions.



As a dining table it is 56" wide x 47" long. The table can also be converted to 31" wide x 34 ³/₄" long; this is an official card playing table size. This conversion is easily accomplished by the 6 ¹/₄" fold back leafs placed along three sides of the table.



Converting the table into its berth size of 56" wide x 7' long requires the table height to be electrically adjusted to 17" high. This allows the table to become even with the U shaped wrap around bench seating. As a safety precaution to avoid accidental activation of the table's height adjustment features, the electrical control switch is concealed within a small cabinet located at the entrance of the galley. In addition to the central vacuum system, under the dining salon sole are water tanks, refrigeration cooling units and the vessel's batteries.



At the bow of the dining salon a large mahogany island divides this cabin from the galley. This feature allows for visual access overlooking into the galley thereby creating an open concept within both cabins.

GALLEY

Unlike the yacht's original **galley**, Miss Scarlett has a spacious, fully functional and uniquely customized galley. In fact, most of the space that is now allocated to the galley was originally used as a forward berth for the crew, storage space, and only allowed for a small narrow galley off the dining salon. Stairs on the port side enter from the dining salon down into the galley. The galley now, at its mid point, is lengthy and wide. Natural light is generously provided from three port holes on the starboard side and from an overhead skylight. In addition to the cabin's overhead lights, vision is further supplemented with unique swivel lights, strategically placed directly below upper cupboards that maneuver light onto the counter space as required.



Previously, counter space was nonexistent, whereas on port side the counter now extends 78" in length and is 24" in width. This includes an extra deep double sink that is accented with a vegetable water sprayer. Customized features encompassed within this counter include: a swivel TV/VCR unit that allows visibility to both the galley and dining salon, the dining table electrical control switch cupboard, a pop up spring activated compose unit built into the counter top, and refuse compartments for both recyclable and regular refuse built beneath the sink. As well, on either side of the sink there are several utility drawers. Counter tops are hunter green in color with mahogany edges, and in contrast, the galley cupboards and drawers are white arborite with mahogany edges. The counter space located below the dining salon island divider, at the aft section of the galley, has compartments with six double receptor electrical outlets. These units are allocated for features such as: a coffeemaker, microwave oven and a cupboard unit for large items (i.e. crock pot).



Directly below this area is the galley's customized refrigerator that is 2' wide x 2' high x 18" deep. Moving starboard side, the counter space is 27" wide and has a built in freezer that is 13" wide x 25 1/2" long x 23" deep. The freezer door lifts upward and is customized to match the green counter top. To the left of the freezer, housed within the counter space is the galley's three burner propane stove and oven. This stove has a leveling unit to assist with stability when the boat is in motion. Conveniently placed next to the stove are extra large storage drawers. Within the galley there is ample maneuvering room for passengers, at its mid point there is three feet between the port and starboard counters and this space narrows moving toward the bow of the vessel.



At the bow tip of the galley there is a bench seating area that offers additional storage space underneath its seat. This area also provides access to the vessel's bow thruster motor. Located above and directly behind the bench seat is the chain locker where further storage space has been allocated for items such as dry goods.



PASSAGEWAY



The **main passageway**, extending from the wheelhouse to the aft cabin measures 10' in length and 4' in width but narrows to a width of 2' as it curves toward the aft cabin. The halls width increase, located directly outside of the guest cabin, accents this cabin's spacious affect while it functions as a sitting room during the day. On the port side of the passageway are two flip up windows positioned above a 56" long counter ledge that is 14" deep. Within this counter are three separate storage units that neatly house the vessel's stereo system and other music components. Directly below the counter are three raised mahogany panels that elegantly conceal one of the yacht's diesel fuel tanks.



GUEST CABIN



To balance and offset the weight of the port side fuel tank a second diesel fuel tank is positioned underneath the berth in the **guest cabin** on the starboard side. This cabin is entered through two mahogany doors that extend to a width of 38". To the left of the door way is a curved, lower corner cabinet with slide away doors that has one small drawer and is complimented by an upper 22" wide three way folding mirror, that neatly closes behind two elegant mahogany doors. The cabin itself measures 71" in length and 65" in width. A day couch extends along the starboard wall directly below three windows. The day couch, 70" long and 33" wide, has a flip up panel that converts to berth size. Individually controlled stereo speakers are built into the bulkhead at the foot and head of the berth. At the bow of this cabin there is a doorway that leads into the vessel's engine room.



AFT CABIN

Miss Scarlett's **aft cabin** is both spacious and highly functional. At its entrance, the aft cabin measures 7'4" in length and 7'6" in width. However, at its mid point the width increases to 9'3". Previously this cabin had two small berths on either side of the cabin. Now, one double size berth, 80" long and 51" wide, houses within its base several storage compartments and one of the vessel's water tanks. Underneath the berth's mattress is a large storage area, 18"x18"x51" deep, that in addition to its top flip up door has a second door on the berth's bow base for easy access. Also at the head of the berth's base, beneath the mattress, there are two flip up doors to access a storage cupboard that measures 21"x51". At the foot of the berth, resting neatly against the base when not in use is a portable seat that securely flips up and is positioned opposite the cabin's vanity table. The flip up mirrored vanity table, 2' wide x 15" deep, is on the cabin's port side nestled between two, elegant five drawer dressers. Positioned above the dressers are three windows that extend across the cabin's port side.



On either side, at the head of the berth starboard side, are two, three drawer night tables. One of which has a built in alarm clock, while both have pivotal lamp lights and stereo speakers that can be individually controlled. Above are another three windows extending across the starboard bulkhead. Hanging locker closets with sliding fold away doors are located at both the bow and aft entrances of the cabin. Extending across the aft bulkhead are double shelving units, placed behind fold away doors. Access to the vessel's aft deck is permitted from this cabin by a small ladder located at the corner of the aft and port side. Two mahogany doors open outward to the aft deck area.



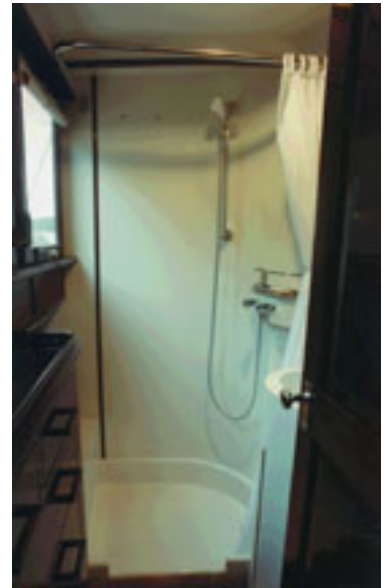
This cabin is rich in its mahogany presentation as three of the four bulkheads are constructed from mahogany panels as are the dressers and other cabinets. The bow bulkhead is the combined white arborite with mahogany strips that is consistent throughout the vessel. Along the port side of the bow bulkhead is the entrance to the cabin's ensuite.



AFT ENSUITE



As you enter into the **aft cabin's ensuite**, port side there is a full size chest of drawers and two windows that extend across the length of the cabin. Measuring 5' in length and 42" in width, this cabin offer a full size stand up shower area with a storage seat. On the starboard side is a sink with lower vanity cupboard. A double receptor electrical outlet is located near the upper mirrored cabinet. Closest to the door starboard side is a foot pedal vacuum flush toilet.



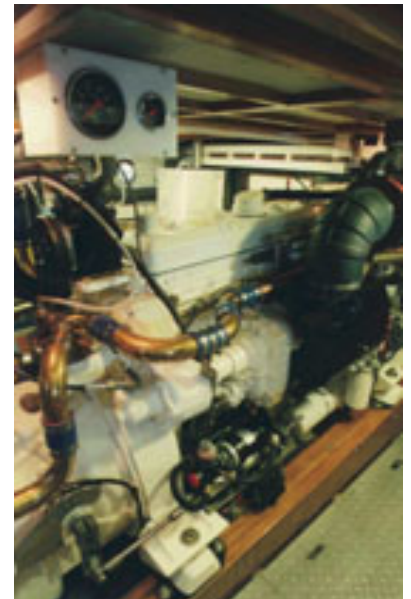
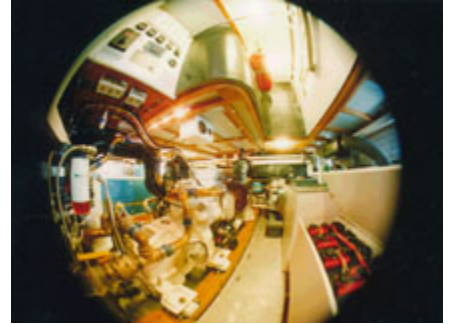
ENGINE ROOM

The **engine room** has been set-up to meet with US Coast guard standards. This is advantageous to ensure that Miss Scarlett qualifies for commercial (chartering) liability insurance coverage. The engine room is 8' in length and 12' in width. Entering from the starboard side, through the guest cabin, provides a generous 7' high head height area to allow a passenger to stand up-right within a portion of the cabin.

Conveniently located at the port side of the entrance way is a fire extinguisher and an electrical distribution panel that houses the electrical workings from the engine room to the aft cabin. Water tank gages are also positioned on this panel for easy readability. The floor is metal plated and sound absorption material is placed around equipment and also surrounds the entire room to reduce operating noises for the passengers aboard Miss Scarlett.

To assist with comfort while working within this cabin, there is an upholstered seat and a work bench with an electrical outlet. The yacht's engine (671 Detroit diesel, generator power 240, 50 amps) has a drip pan to enable fluid leakage removal. A fresh air ventilation unit provides clean, fresh air within the engine room and throughout the entire vessel. Miss Scarlett also has an isolation transformer for electrical conversion purposes.

In addition to overhead lighting, additional light fixtures have been placed above and near various components. As well, natural light is filter through two port holes located on both the port and starboard sides of this cabin. The engine room can also be accessed from the port side of the vessel from stairs that lift up into the dining salon. Also, affixed within the wheelhouse flooring is a large hatched door that lifts upward; this would enable the engine to be removed or dismantled should that be required.





WESTWIND

YACHT SALES

at Queen's Cove Marina ~ Georgian Bay

For more information contact:

Brenda Flower

Westwind Yacht Sales

Tel: (705) 528-9979

Fax: (705) 538-0712

www.WestwindYachtsCanada.com